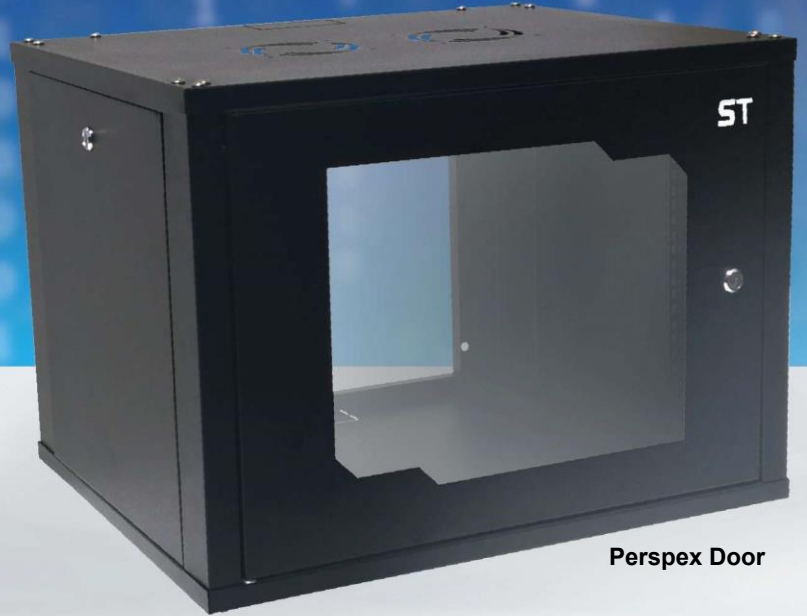




RACK WALL MOUNT RACK

ST-Rack Wall Mount Equipment Rack is a design for multi vendor equipment wall mounted rack. It come with depth of 400mm to 800mm. ST-Rack also provide two choices of the front outlook such as Perforated Type and Perspex Type. Easy lift off door hinge provide convenience and creating works space for high density 19" rack mount equipment.



Perspex Door



FEATURES

- Rack framework
- Top cover with ventilation fan position for 2 fans (optional)
- One Front Perforated or Perspex Metal Door with Cam lock
- 2 Detachable side panels with lock
- 4 Universal adjustable panel mounting members
- Cable entry provided for the rear section
- Power cable with plug top
- 20 sets of M6 caged nuts
- Epoxy high quality powder coated finishing (Black colour).
- A wide range of accessories



Perforated Door

Optional add on accessories:



A

Ventilation Fan



B

Sliding Tray



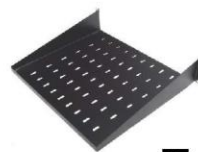
C

1U Cable Management Panel



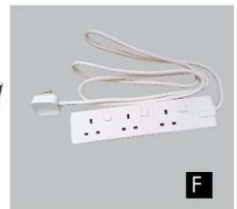
D

Equipment Tray



E

Cantilever Tray



F

PVC Power Outlet



Cam Lock



Ventilation Fan

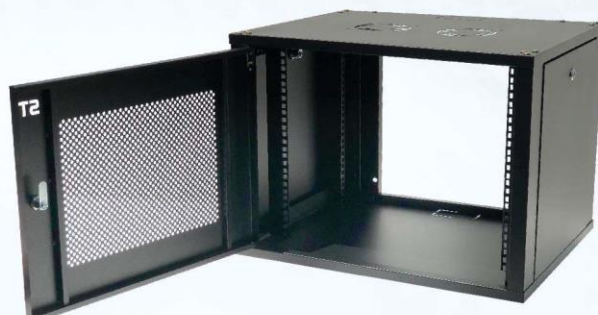


Panel Mounting Member



2 detachable side panel with Lock

Open View (Door With Perforated)



Open View (Door With Perspex)



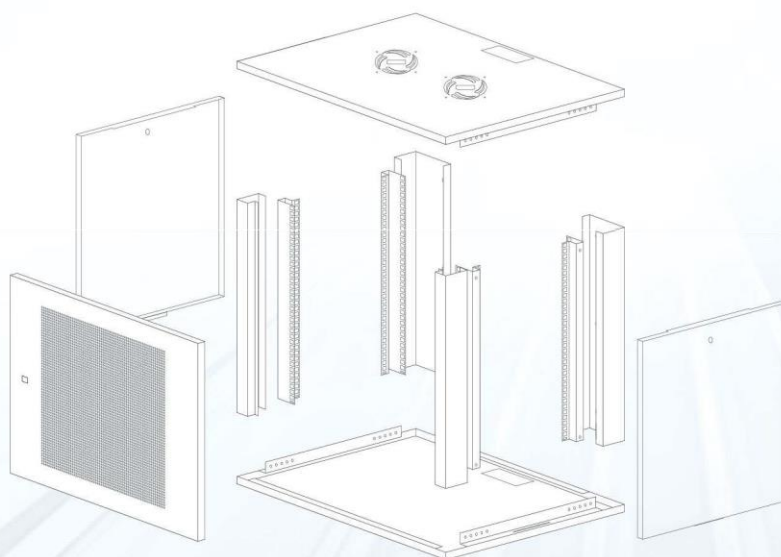
STANDARDS

DETAIL

- IEC 297-2
- DIN 41494, Part 7
- DIN 41491, Part 1 Mounting Dimension
- EN 60950
- VDE 0100
- EIA-310-D
- 1U = 44.45mm

ACCESSORIES

- Cam Lock
- M6 Caged Nuts
- Perspex Door / Perforated Door
- Panel Mounting Member



Wall Mount Rack (WM)

U	Width (mm)	Depth (mm)				
		400	500	600	700	800
4U	600	ST-WM0464	ST-WM0465	ST-WM0466	ST-WM0467	ST-WM0468
6U	600	ST-WM0664	ST-WM0665	ST-WM0666	ST-WM0667	ST-WM0668
9U	600	ST-WM0964	ST-WM0965	ST-WM0966	ST-WM0967	ST-WM0968
12U	600	ST-WM1264	ST-WM1265	ST-WM1266	ST-WM1267	ST-WM1268
15U	600	ST-WM1564	ST-WM1565	ST-WM1566	ST-WM1567	ST-WM1568
18U	600	ST-WM1864	ST-WM1865	ST-WM1866	ST-WM1867	ST-WM1868
24U	600	ST-WM2464	ST-WM2465	ST-WM2466	ST-WM2467	ST-WM2468