



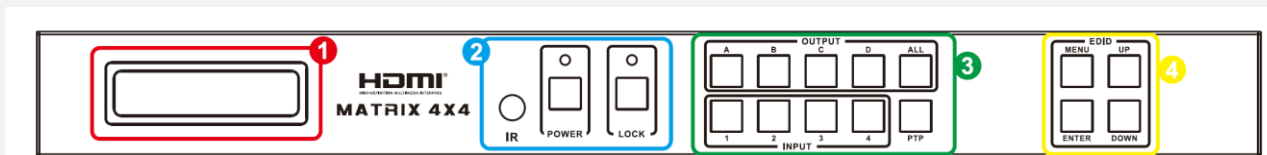
**AC-944H70**  
4 x 4 HDBaseT  
HDMI Matrix Switch, 70m

Advance Connex AC-944H70 4 in 4 out HDBaseT 4K HDMI matrix switch, capable to support video transmission up to max 70m over single Cat6 cable. The HDBaseT HDMI matrix switch feature with 4 x RJ45 output (max 70m) and HDMI port which is mirrored and run simultaneously. Apart from 4k high resolution, the matrix switch support digital audio format such as LPCM 7.1ch, Dolby TrueHD, Dolby digital plus and DTS-HD master audio.

#### Features:

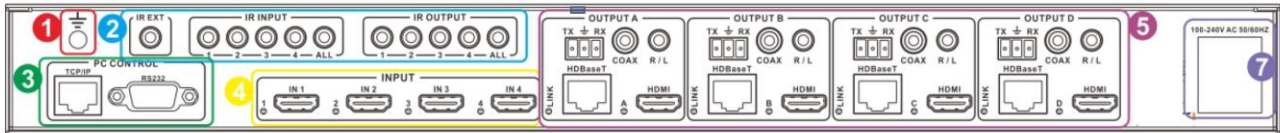
- HDMI 2.0, HDCP 2.2 compliant
- Video resolution up to max 4k2k@30Hz
- Distance supported: 70m for HD1080p, 40m for UHD4K
- Support reception of any audio data conforming to the HDMI specification such PCM up to 192kHz, compressed audio (IEC 61937), DSD, DST, DTS and HBR
- POE function
- Support simultaneous HDMI and CAT outputs
- Wideband IR(30-60Khz) for matrix system
- Support smart EDID management
- Control via on-panel Button, remote control, RS-232 or LAN
- 1U rack mounted design size

#### Front panel description:



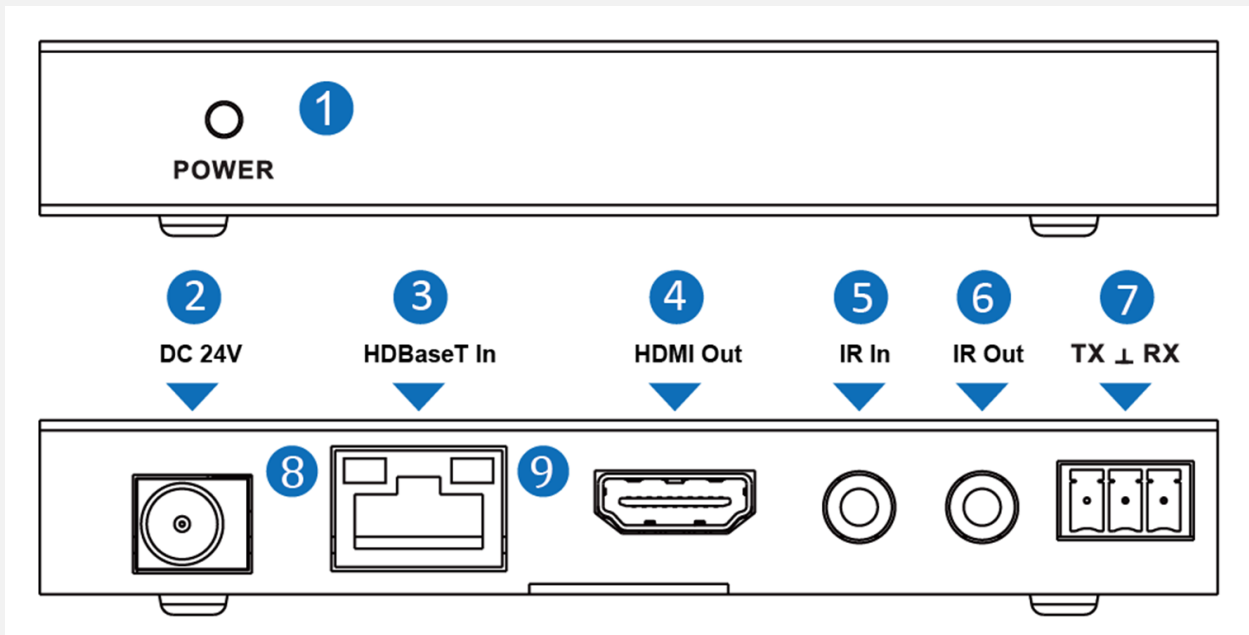
1. LCD Screen – display information of each input and output video setting and EDID management.
2. IR, power and lock button – IR receiver window, power on/off button, lock panel button
3. Output & input – Video display selection for output/input devices
4. EDID – Button to select menu and EDID management configuration

## Rear panel description:



1. GND - Connect the Housing to ground
2. IR sensor port – for remote control to access matrix switch & equipment IR input and output
3. PC control – LAN & Rs232 for pc/control system to access
4. HDMI input – Input port for HDMI sources
5. Output port – HDMI port for Tv/Projector,  
HDBaseT to connect HDBaseT receivers units,  
Coaxial & analog audio to connect audio amplifier.
7. AC power – to connect AC power cable

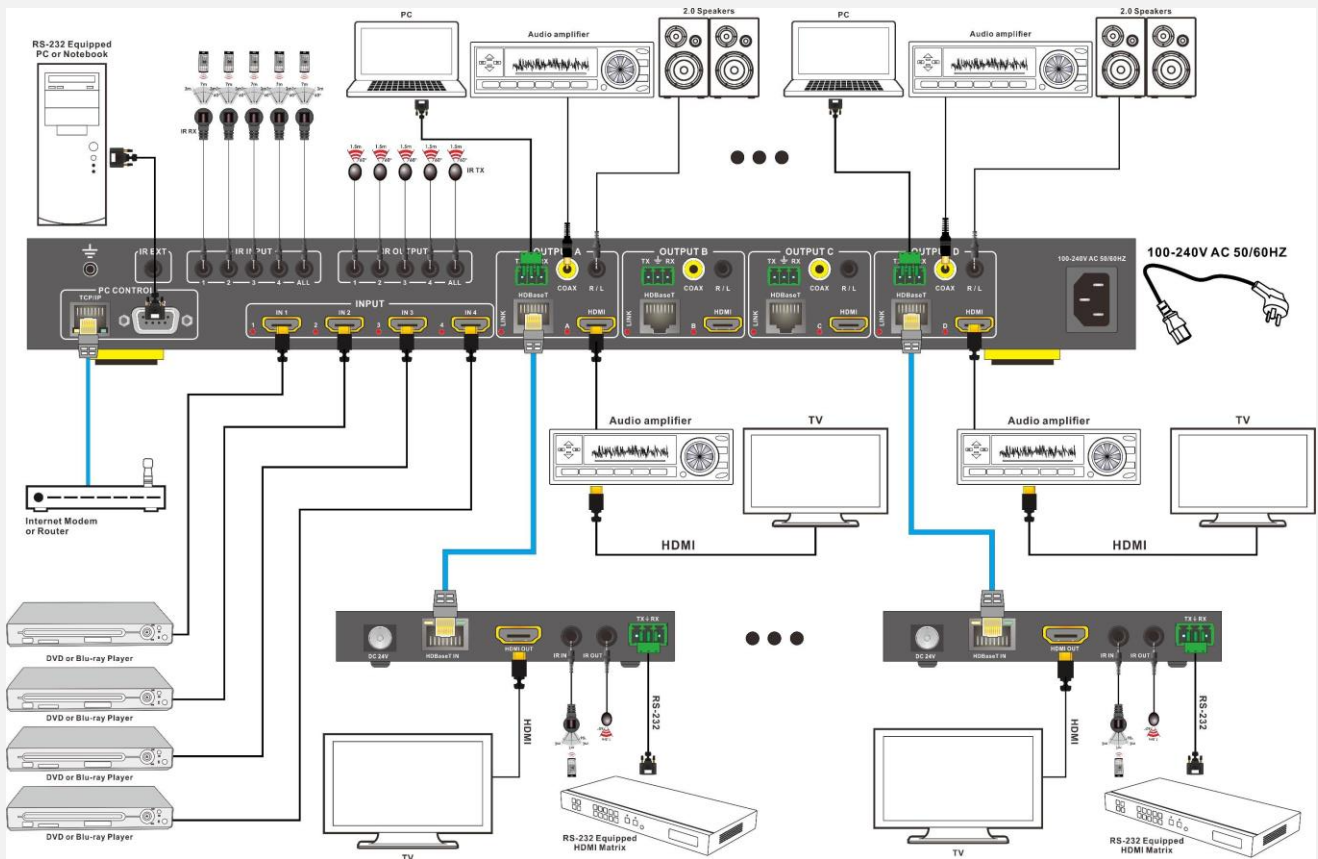
## HDBaseT receiver unit:



1. Power – led indicator light for power status.
2. DC24 – power source from power adapter. (optional)
3. HDBaseT in – input Cat6 cable from matrix switch.
4. HDMI out – HDMI output port to TV/Projector display unit.
5. IR in – IR input cable.
6. IR out – IR output cable.
7. Rs232 – control signal to Rs232 equipment
8. Connection Signal Indicator Lamp – led indicator light for video running status
9. Data Signal Indicator Lamp – led indicator light for hdmi signal status

| Technical Specification:      |   |
|-------------------------------|---|
| Video Bandwidth               | 297MHz [10.2Gbps]   |
| Video Resolution              | 480i,576i,480p,576p,720p,1080i,1080p24/30/50/60.4Kx2K@30                      |
| Distance supported            | HD1080p max 70m<br>4K@30 max 40m  |
| Matrix input Ports            | 4 x HDMI<br>5 x IR Receiver<br>1 x RS-232<br>1 x RJ-45 (Control)<br>4 x RS232 |
| Matrix Output Ports           | 4 x Rj45<br>4 x HDMI<br>4 x IR Blaster  |
| HDbaseT receiver Input Ports  | 1 x HDMI<br>1 x IR<br>1 x Rj45<br>1 x Rs232<br>1 x Dc 24v (optional)          |
| HDbaseT receiver Output Ports | 1 x HDMI  |
| ESD Protection                | ± 8kV (Air-gap discharge)<br>± 4kV (Contact discharge)                        |
| Dimensions                    | 440 mm (W) x 200 mm (D) x 45 mm (H)   |
| Weight                        | 1.9 Kg  |
| Chassis Material              | Metal   |
| Silkscreen Color              | Black   |
| Operating Temperature         | 0 °C~40 °C/32 °F~104 °F   |
| Storage Temperature           | -20 °C~60 °C/-4 °F~140 °F   |
| Relative Humidity             | 20~90 % RH (non-condensing)   |
| Power Consumption             | 50watt (max) / 0.5watt (Standby)  |

## Connection Diagram:



## Package content:

|                             |         |
|-----------------------------|---------|
| 4 x 4 Matrix Switch         | 1 unit  |
| HDBaseT Receiver Unit       | 4 units |
| AC Power cord               | 1 unit  |
| Operation Manual            | 1 unit  |
| IR Tx cable                 | 5 units |
| IR Rx cable                 | 6 units |
| Remote Control              | 1 unit  |
| Matrix mounting ears        | 1 pair  |
| HDMI receiver mounting ears | 4 pairs |
| RS232 cable                 | 1 unit  |