

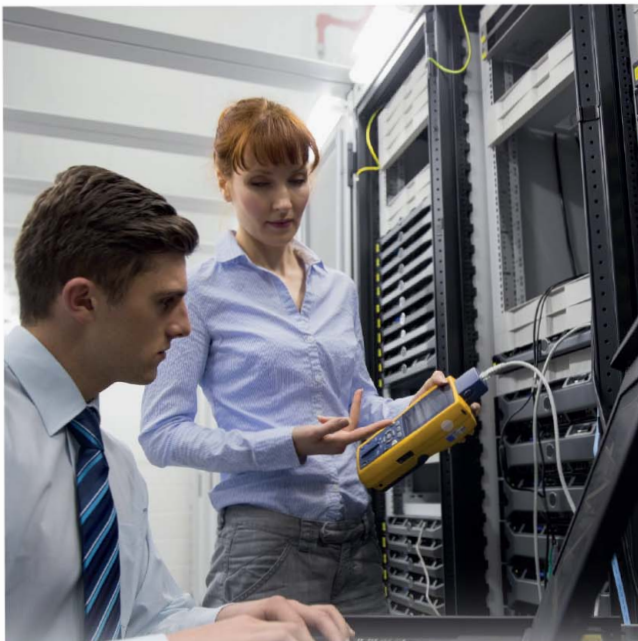
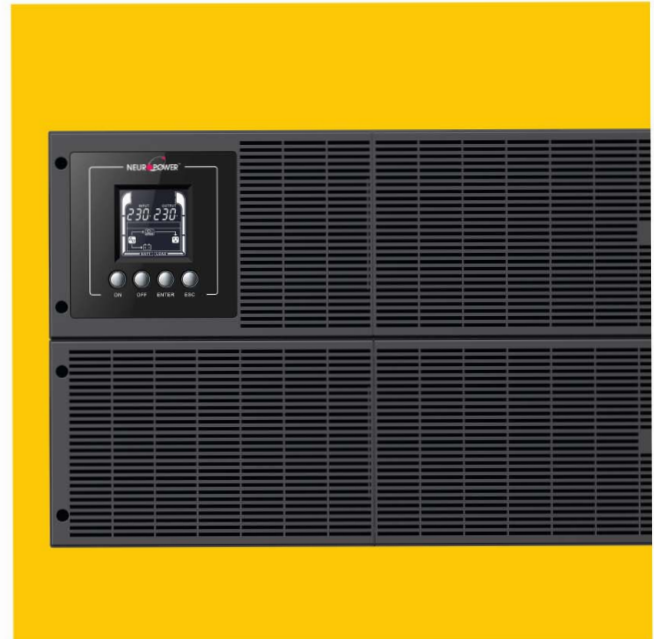
Cronus Pro Rackmount Series

1KVA - 10KVA

Cost-effective

Double Conversion

Online UPS



- True double-conversion On line UPS
- Microprocessor control optimizes reliability
- Input power factor correction
- Output power factor 0.9
- Wide input voltage (80 V – 300 V)
- Multifunction LCD display allows easy monitoring and control of UPS parameters
- Emergency power off (EPO) function
- ECO mode and high efficiency power conversion for energy saving
- HID (Human Interface Devices) USB Port
- Bundle Power Management Software with Cloud Monitoring Enabled
- Smart Slot for Optional Mini-Wifi, CMCARD-W, MINI-ETH CMCARD-E, SNMP CARD
- Generator compatible

Cronus Pro Rackmount Series Cost-effective Double Conversion Online UPS



front panel - Cronus Pro 1KR / 2KR / 3KR



rear panel - Cronus Pro 2KR



rear panel - Cronus Pro 1KR



rear panel - Cronus Pro 3KR



Cronus 6KR / 10KR (top)



Rear Panel Cronus 6KR / 10KR (bottom)

Technical Specification

MODEL	Cronus Pro 1KR/1KRS	Cronus Pro 2KR/2KRS	Cronus Pro 3KR/3KRS	Cronus Pro 6KR/6KRS	Cronus Pro 10KR/10KRS	
Phase	Single Phase with Ground					
Output Power Factor	1000VA/900W	2000VA/1800W	3000VA/2700W	6000VA/5400W	10000VA/9KW	
Input						
Voltage Range	80 VAC - 300VAC \pm 3% @50% load, 160-300VAC for 1K & 2K @100 load, 190-300VAC for 3KVA & Above			80 VAC - 300VAC \pm 3% @40% load, 176-300VAC for @100 load		
Frequency Range	40Hz ~ 70Hz			45-55Hz or 54-66Hz		
Phase	Single phase with ground					
Power Factor	\geq 0.99					
Output						
AC Voltage & Regulation	208/220/230/240 VAC +/- 1%					
Frequency Range (Batt. Mode)	50Hz \pm 0.5%					
Current Crest Ratio	3:1					
Harmonic Distortion	\leq 2% THD (Linear Load), \leq (Non-linear load)					
Overload Protection	Line Mode	105%-110% Warning without shutdown Transfer Bypass for 111%-120% @60s, >120% Immediately		Transfer Bypass for 105%-125% @1 min, 126%-135% @30s, 136%-150% @10s, >150% Immediately		
	Battery Mode	105%-110% Warning without shutdown Shutdown for 111%-120% @10s, >120% Immediately		Shutdown for 105%-125% @60s 126%-135% @30s, >135% Immediately		
	Bypass Mode	110%-130% Warning without shutdown Shutdown for >130% Immediately		Cut-off for 125%-150% & Warning for 60s Cut-off for 150%-170% & Warning for 10s Cut-off for >170% & Warning for 1s		
Waveform (Batt. Mode)	Pure Sinewave					
Output Type	8 x IEC C14	8 x IEC C14	8 x IEC C14+1 x C19	Terminal	Terminal	
EFFICIENCY						
AC Mode	88%	90%	91%	92%		
Battery Mode	85%	87%	88%	90%		
ECO Mode	96%	96%	96%	96%		
BATTERY						
Standard K Model	Battery Type (QTY)	12V/9AH (2pcs)	12V/9AH (4pcs)	12V/9AH (6pcs)	12V/7AH (16pcs)	12V/9AH (16pcs)
	Typical Recharge Time to 90%	4 Hours	4 Hours	4 Hours	5 Hours	6 Hours
	Charging Current (CC)	1.5A	1.5A	1.5A	1.0A	
Standard KS Model	Charging Voltage (FV)	27.4VDC \pm 1%	54.7VDC \pm 1%	82.2VDC \pm 1%	218.4VDC \pm 1%	
	Battery Type (QTY)	2psc & depending on Battery AH	4psc & depending on Battery AH	6psc & depending on Battery AH	16psc & depending on Battery AH	
	Typical Recharge Time to 90%	on Battery AH				
	Charging Current (CC)	4A/8A	4A/8A	4A/8A	4A	
	Charging Voltage (FV)	27.4VDC \pm 1%	54.7VDC \pm 1%	82.2VDC \pm 1%	218.4VDC \pm 1%	
INDICATORS						
Status	LCD display for load level, battery level, AC mode, Battery mode, Bypass mode and fault indicator					
ALARM						
Battery Mode	Beeping every 10 seconds					
Low Battery	Beeping every 2 seconds					
Overload	Beeping twice every second					
Fault	Continuously Beeping					
PHYSICAL						
Standard K Model	Dimension, D x W x H (mm)	UPS:430 x 438 x 88	UPS:430 x 438 x 88	UPS:610 x 438 x 88	UPS:480 x 438 x 131 EBM:680 x 438 x 131	UPS:480 x 438 x 131 EBM:680 x 438 x 131
	Net Weight (kgs)	10.4	17.15	27.6	59.4	70.0
Standard KS Model	Dimension, D x W x H (mm)	UPS:430 x 438 x 88	UPS:430 x 438 x 88	UPS:610 x 438 x 88	UPS:480 x 438 x 131	UPS:480 x 438 x 131
	Net Weight (kgs)	8.4	8.5	12.0	13.8	14.6
ENVIRONMENT						
Humidity and Operating temperature	20-90% RH @ 0-40°C (non-condensing)					
Noise Level @ 1 meter	<45dB	<50dB	<50dB	<55dB	<55dB	
MANAGEMENT						
Smart RS-232	CLOUD Ready PowerMaster Management Software Supports Windows					
HID Compliant USB						
Smart Slot						For Mini-Wifi CMCARD-W, Mini-Eth CMCARD-E, Mini SNMP PMCARD and Mini DCT400 Dry Contact Card

* In the interests of continuous product improvement, all specifications are subject to change without notice.

NEUROPOWER (M) SDN. BHD. (637145-P)

D7-3A, Blok D7, Pusat Perdagangan Dana 1,
Jalan PJU 1A/46, 47301 Petaling Jaya, Selangor, Malaysia.
Tel: +60 (3) 7842 9190 Fax: +60 (3) 7842 9254
Hotline: 1300 88 6772 (NPSB)

www.neuropower.com.my