

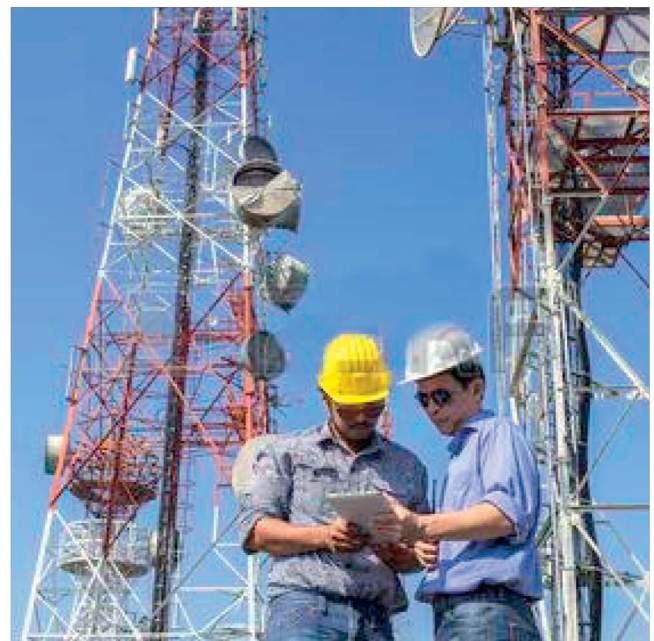
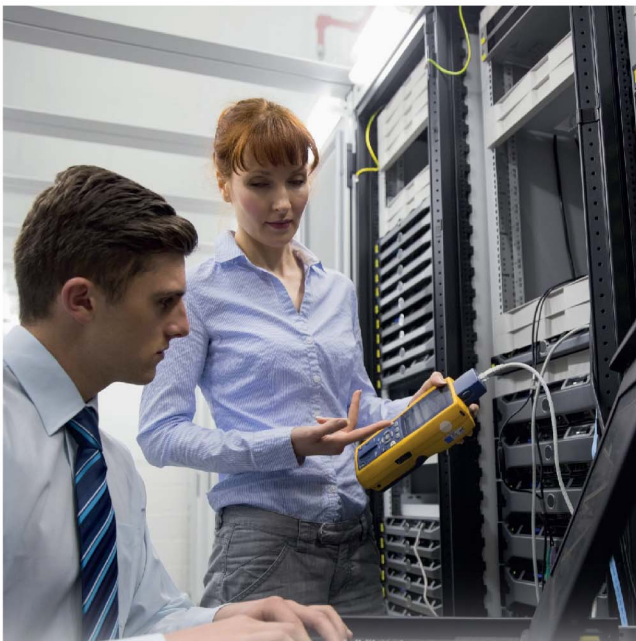
# Cronus Rackmount Series

1KVA - 10KVA

Cost-effective

Double Conversion

Online UPS



- True double-conversion
- Microprocessor control optimizes reliability
- Input power factor correction
- Output power factor 0.8
- Wide input voltage (110 V – 300 V)
- Converter mode available
- ECO mode for energy saving only available for 1-3KVA models
- Generator compatible
- Adjustable charging current via LCD or software (1A~6A)
- Emergency power off function (EPO) only available for 6K/10K models
- Comprehensive display allows easy monitoring and access of UPS status

# Cronus Rackmount Series

## Cost-effective Double Conversion Online UPS



rear panel - Cronus 1KR



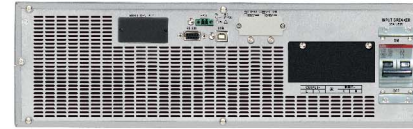
rear panel - Cronus 3KR



rear panel - Cronus 2KR



rear panel - Cronus 6KR



rear panel - Cronus 10KR



Cronus 1-3KR (top)  
Cronus 6KR (bottom)

### Technical Specification

MODEL	Cronus 1KR	Cronus 2KR	Cronus 3KR	Cronus 6KR	Cronus 10KR	
PHASE	Single phase with ground					
CAPACITY	1000VA / 800W	2000VA / 1600W	3000VA / 2400W	6000VA / 4800W	10000VA / 8000W	
<b>INPUT</b>						
Nominal Voltage	100/110/115/120/127VAC or 200/208/220/230/240VAC			208/220/230/240VAC		
Input Voltage Range	55-145 VAC or 110-300 VAC at 50% load 85-140 VAC or 160-280 VAC at 100% load			110-300 VAC $\pm$ 3% at 50% Load 176-300 VAC $\pm$ 3% at 100% Load		
Frequency Range	4Hz ~ 70Hz			46Hz ~ 54 Hz or 56Hz ~ 64 Hz		
Power Factor	$\geq$ 0.99 @ Nominal Voltage (100% load)					
<b>OUTPUT</b>						
Output Voltage	100/110/115/120/127VAC or 200/208/220/230/240VAC			208/220/230/240VAC		
Voltage Regulation	$\pm$ 1%			$\pm$ 1%		
Frequency Range (Sync. Range)	47~ 53Hz or 57 ~ 63Hz			46Hz ~ 54Hz or 56Hz ~ 64Hz		
Frequency Range (Batt. mode)	50Hz $\pm$ 0.25Hz or 60Hz $\pm$ 0.3Hz			50Hz $\pm$ 0.1Hz or 60Hz $\pm$ 0.1Hz		
Current Crest Ratio	3 : 1			3 : 1		
Harmonic Distortion	$\leq$ 3 % THD (Linear load) 6 % THD (Non-linear load)			$\leq$ 3 % THD (Linear load) $\leq$ 5% THD (Non-linear load)		
Transfer Time	AC Mode to Batt. Mode	Zero		0 ms		
	Inverter to Bypass	4 ms (Typical)		0 ms		
Waveform (Batt. Mode)	Pure Sinewave					
<b>EFFICIENCY</b>						
AC Mode	88%	89%	90%	92%	93%	
Battery Mode	83%	87%	88%	90%	91%	
<b>BATTERY</b>						
Standard Model	Battery Type	12V 9AH				
	Quantity	2	4	6	16	20
	Typical Recharge Time	4 hours recover to 90% capacity			9 hours recover to 90% capacity	
	Charging Current (max.)	1A / 2A (Adjustable)				
Extended Runtime Model	Battery Type	Depending on the capacity of external batteries			Depending on applications	
	Quantity	2	4	6	16 - 20 (Adjustable)	
	Charging Current (max.)	1.0A/2.0A/4.0A/6.0 A			1A/2A/4A/6A (Adjustable, 6A is only available for 16pcs batteries)	
	Charging Voltage	27.4 VDC $\pm$ 1%	54.7 VDC $\pm$ 1%	82.1 VDC $\pm$ 1%	218.4 VDC $\pm$ 1% (Based on 16pcs batteries)	
<b>STATUS INDICATORS</b>						
Graphical LCD Display	Load level, battery level, AC mode, battery mode, bypass mode, and fault					
<b>AUDIBLE ALARM</b>						
Battery Mode	Beeping every 4 sec					
Battery Low	Beeping every sec					
Overload	Beeping twice every sec					
Fault	Continuous beeping					
<b>PHYSICAL</b>						
Standard Model	Dimension, W x D x H (mm)	438 x 310 x 88 (2U)	438 x 410 x 88 (2U)	438 x 630 x 88 (2U)	UPS: 438x500x88 (2U) Battery Pack: 438x580x133 (3U)	UPS: 438x580x133 (3U) Battery Pack: 438x580x133 (3U)
	Net Weight (kg)	12	19	29.3	UPS: 15 Battery Pack: 48	UPS: 15 Battery Pack: 61
KS Model	Dimension, W x D x H (mm)	438 x 310 x 88 (2U)	438 x 410 x 88 (2U)		UPS: 438 x 500 x 88 (2U)	UPS: 438 x 580 x 133 (3U)
	Net Weight (kg)	9	12	14.2	15	18
<b>COMMUNICATIONS</b>						
Interface Port	USB, Smart RS-232, EPO & Intelligent slot					
Intelligent Slot	AS400 / SNMP - optional					
Emergency Power Off (EPO)	Yes					
<b>POWER MANAGEMENT</b>						
Software	Yes; Support Window® family, Unix, Linux, Ubuntu, Solaris & MAC Operating System					
<b>ENVIRONMENT</b>						
Humidity	20-90 % RH @ 0- 40°C (non-condensing)			0-95 % RH @ 0- 40°C (non-condensing)		
Noise Level	< 50dBA @ 1 Meter			< 55dBA @ 1 Meter		

\*Long-run model is only available in 200/208/220/230/240VAC systems.

\*\*Derate to 80% of capacity in Frequency converter mode and to 80% when the output voltage is adjusted to 100/200/208VAC

• In the interests of continuous product improvement, all specifications are subject to change without notice.

**NEUROPOWER (M) SDN. BHD.** (637145-P)

D7-3A, Blok D7, Pusat Perdagangan Dana 1,  
Jalan PJU 1A/46, 47301 Petaling Jaya, Selangor, Malaysia.

Tel: +60 (3) 7842 9190 Fax: +60 (3) 7842 9254

Hotline: 1300 88 6772 (NPSB)

[www.neuropower.com.my](http://www.neuropower.com.my)